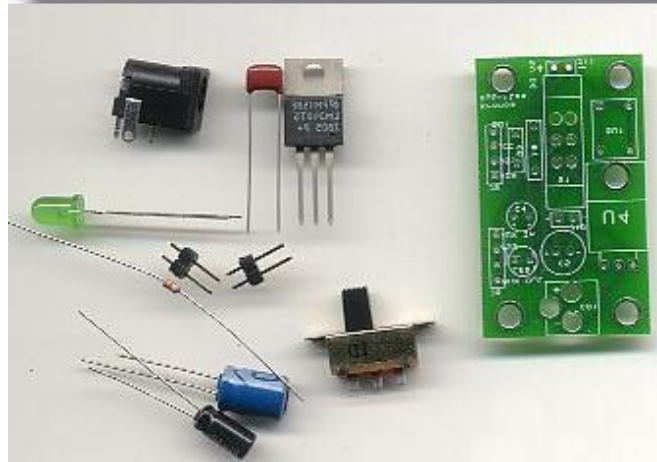


Breadboard Regulator Assembly and Hookup

BBPWR1

Manual Version 1.2



Your Kit will include the following parts

- Printed Circuit Board
- Documentation
- 7805 Regulator
- 100uf Capacitor
- 10uf Capacitor
- .1uf Capacitor
- DPDT Switch
- 390 Ohm Resistor
- 2.1 mm Power Jack
- 2 2 pin Headers

Kronos Robotics
and Electronics



© Copyright 2002
Kronos Robotics

www.kronosrobotics.com
msimpson@kronosrobotics.com

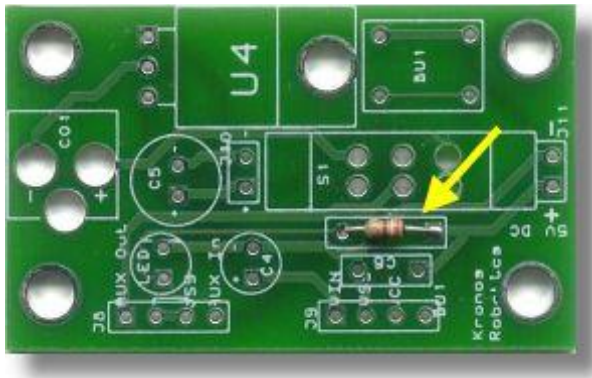
Table of Contents

Assembly.....	4
Hookup.....	7
Links	8

Assembly

If you purchased your Serial LCD already assembled disregard this section.

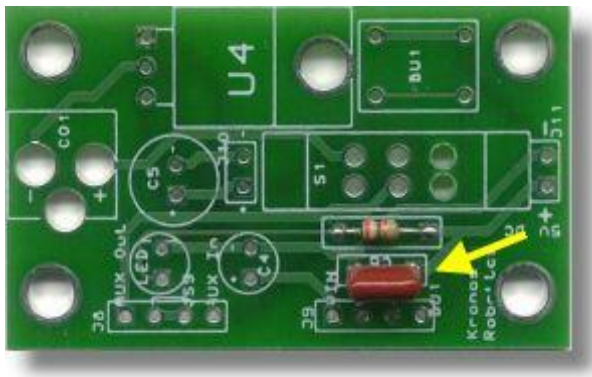
You will need a soldering iron, solder and wire cutters.



Step 1

Start by installing the 390 Ohm resistor into the R1 slot as shown.

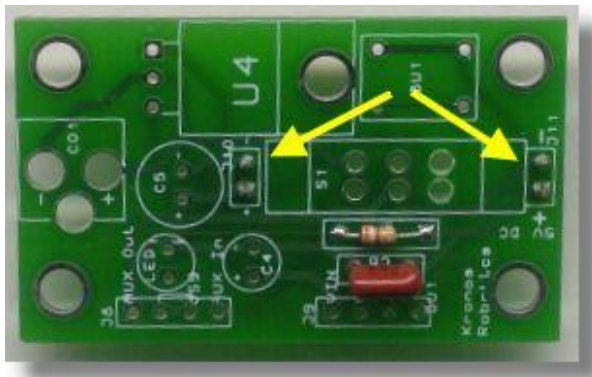
Solder in place and clip off excess leads



Step 2

Insert the .1uF capacitor into the C6 slot as shown.

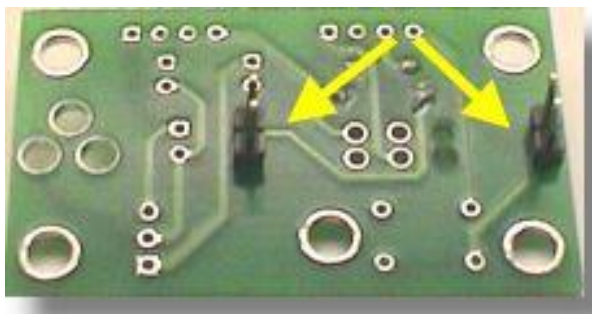
Solder in place and clip off excess leads



Step 3a

Insert the two headers from the bottom of the board into the J10 and J11 slots as shown.

Solder from the top of the board.



Step 3b

This is the underside of the board showing the 2 pin headers.



Step 4

Insert the 7805 regulator chip into the U4 slot as shown.

Solder in place and clip excess leads.



Step 5

Insert the LED into the LED 1 slot as shown.

The small flat spot on the LED should face the 7805 regulator.



Step 6

Insert the Power jack into the CO1 slot as shown.

Solder in place.

The holes for this component are a bit large so solder the lead to the closets edge.



Step 7

Insert the 10uF capacitor into the C4 slot as shown.

Make sure the negative lead is inserted into the hole marked with the -

Solder in place and clip the excess leads.

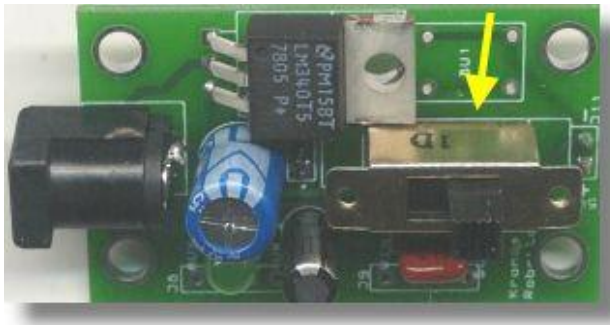


Step 8

Insert the 100uf capacitor into the C5 slot as shown.

Make sure the negative lead is inserted into the hole marked with the -

Solder in place and clip the excess leads.



Step 9

Insert the DPDT switch into the S1 slot as shown.

It is a very tight fit so you will have to work it into place.

As soon as the leads protrude out the opposite side you can solder into place.

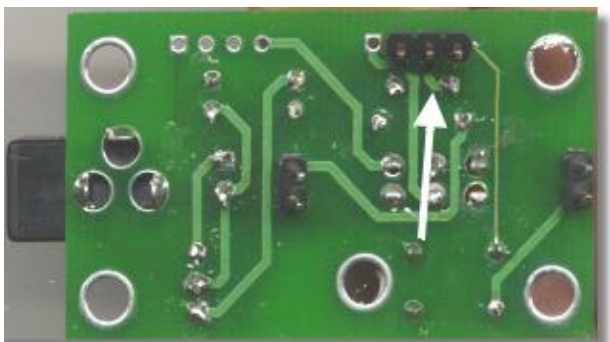
This completes the assembly. If you purchased the optional reset button proceed to step 10.



Step 10

If you purchased the reset button option insert the button into the position shown. You will have to work the leads into place.

Solder in place.



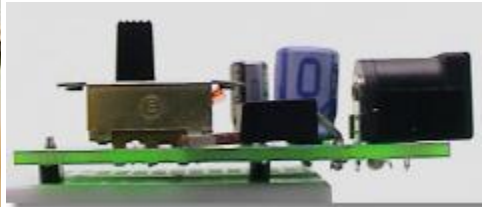
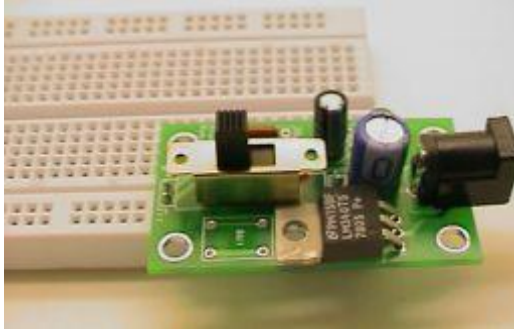
Step 11

Now insert the short end of the three pin header into the three holes shown (VSS,VCC,Reset)

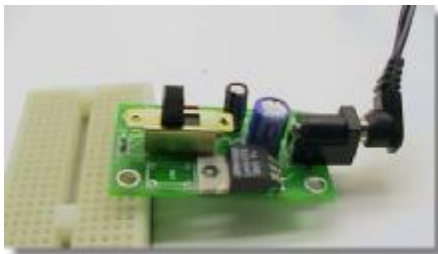
Solder in place from the top of the board.

Hookup

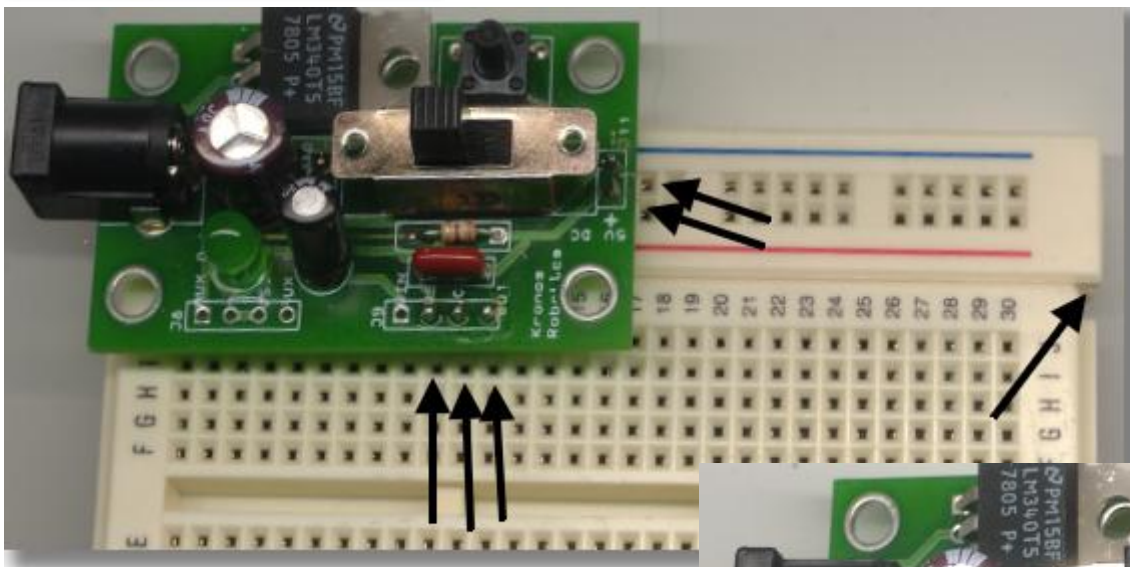
To use the module just plug into the bus of any breadboard. Make sure you observe the voltage polarity written on the board.



There are two sets of pins that can both be plugged into the bus for added support. However contact need only be made with one set.



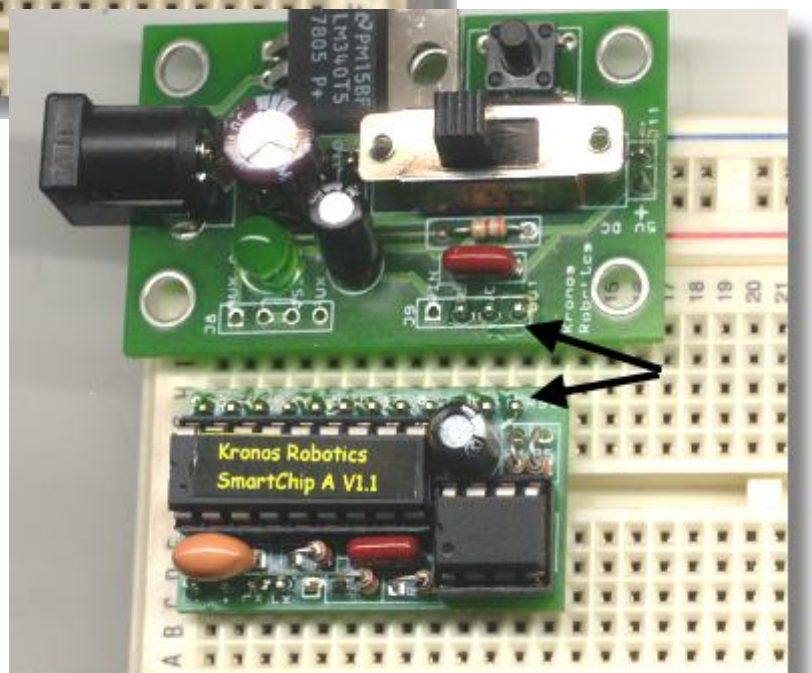
To use on breadboards without a power bus just plug into the board at a right angle as shown.



If you are using the reset button and three pin header insert the regulator so that the three pin header are inserted into breadboard positions 10, 11, and 12 as shown.

You may need to slide the buss just a bit.

Now insert your Smart Module into positions 1-12 on the breadboard. Make sure the reset pin on the Regulator and Smart module are lined up as shown.



Links

Be sure to visit the Kronos Robotics web site for more information and updates. You can also download example programs for various processors for the serial LCD.

Web Site

<http://www.kronosrobotics.com>

Full color assembly instructions and other downloads

<http://www.kronosrobotics.com/products/pdfs/pdfs.htm>